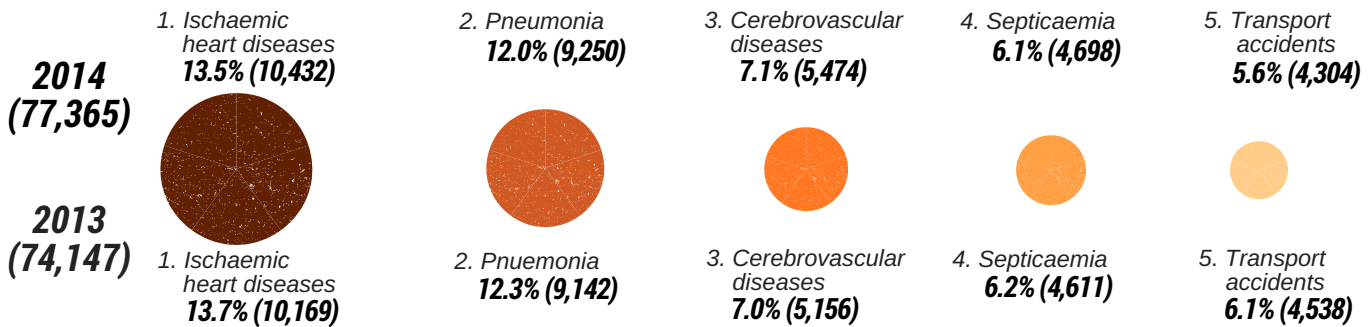
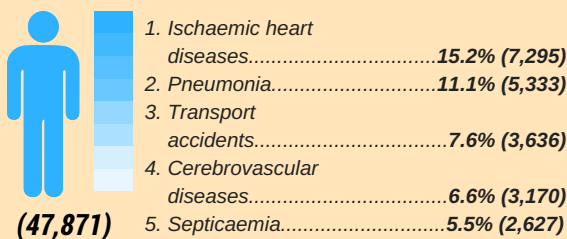


# Principal Causes of Death, Malaysia, 2014

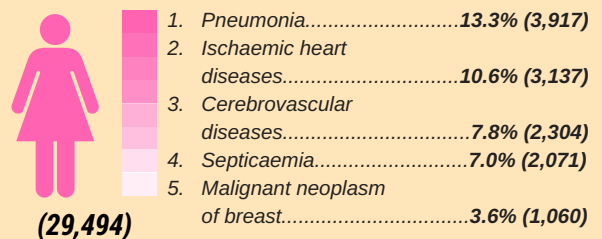
**Ischaemic heart diseases** was the principal cause of death in **2014 (13.5%)** with a decline of **0.2 percentage points** compared to **2013 (13.7%)**



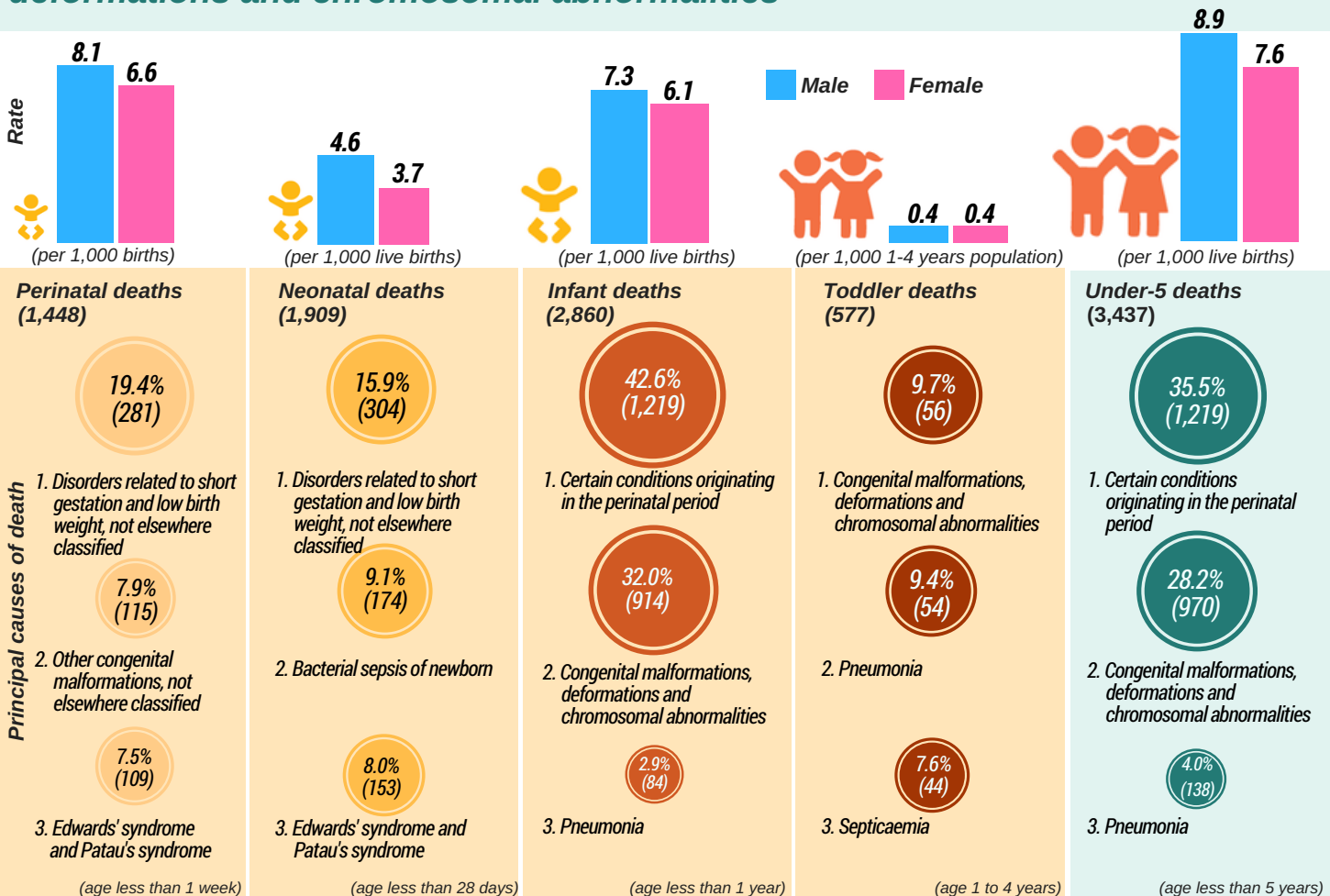
**Ischaemic heart diseases** was the principal cause of death for males in **2014 (15.2%)**



**Pneumonia** was the principal cause of death for females in **2014 (13.3%)**



Nearly two third (63.7%) of under-5 deaths in 2014 was caused by certain conditions originating in the perinatal period and congenital malformations, deformations and chromosomal abnormalities



Notes:  
 i. The statistics are based on the medically certified causes of death (77,365 of 150,318 total deaths in 2014).  
 ii. Values in ( ) shows the number of deaths.